

Marine anchor chain





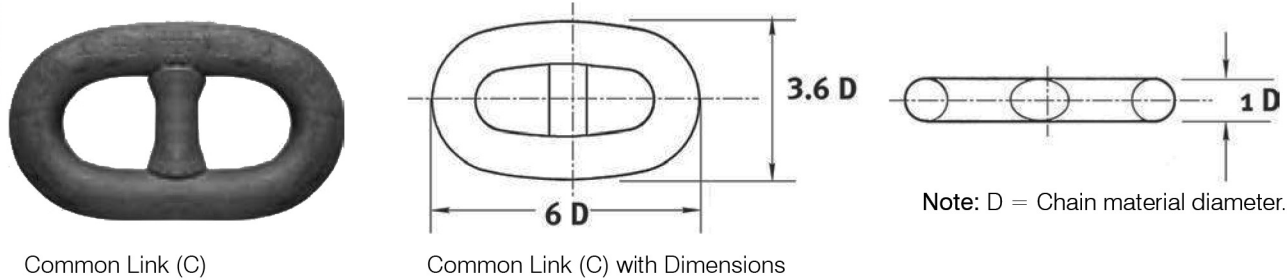
marineusedgood

Stud link anchor chain

Stud Link Anchor Chain

Stud Link Anchor Chain is cross-braced on each link to provide increased strength and resistance to crushing. The individual links are named Common Links, with a standard full chain length of 27.5m referred to as a shot or a cable.

Stud Link Chain is most commonly used on larger ocean going vessels such as merchant ships, commercial fishing vessels and super yachts.



Stud Link Anchor Chain conforms with Standard ISO1704 and is supplied with Lloyds (LR) certification. Other approvals are available on request.

- Available in self-colour or hot dip galvanised finish.
- Manufactured in China.



Strength Table For Grades U2 & U3

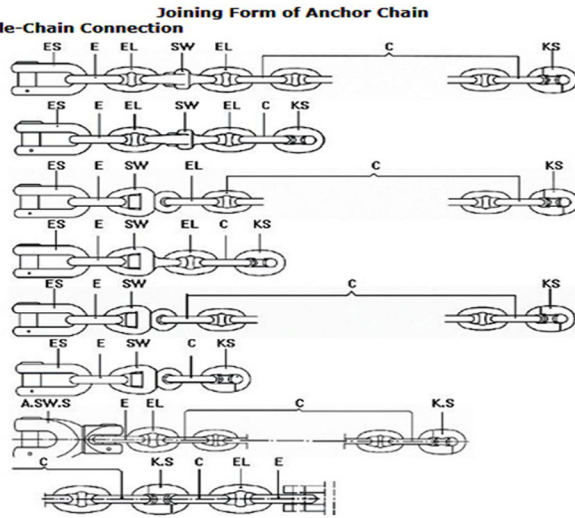
Chain Diameter		Grade U2 (kg)		Grade U3 (kg)	
mm	in	Proof Load	Breaking Load	Proof Load	Breaking Load
12.5	1/2	6,700	9,400	9,400	13,500
14.0	9/16	9,400	11,800	11,800	16,800
16.0	5/8	10,900	15,300	15,300	22,000
17.5	11/16	13,000	18,300	18,300	26,100
19.0	3/4	15,300	21,500	21,500	30,700
20.5	13/16	17,800	24,900	24,900	35,600
22.0	7/8	20,400	28,600	28,600	40,900
24.0	15/16	24,200	33,900	33,900	48,500
26.0	1.0	28,300	39,700	39,700	56,700
28.0	1-1/8	32,700	45,800	45,800	65,500
30.0	1-3/16	37,500	52,400	52,400	74,900
32.0	1-1/4	42,500	59,400	59,400	84,900
34.0	1-5/16	47,700	66,800	66,800	95,600
36.0	1-7/16	53,300	74,600	74,600	107,000
38.0	1-1/2	59,200	82,800	82,800	118,000
40.0	1-9/16	65,300	91,400	91,400	131,000
42.0	1-5/8	71,700	100,000	100,000	143,000
44.0	1-3/4	78,400	110,000	110,000	157,000
46.0	1-13/16	85,300	119,000	119,000	171,000
48.0	1-7/8	92,600	130,000	130,000	185,000
50.0	2.0	100,000	140,000	140,000	200,000
52.0	2-1/16	108,000	151,000	151,000	215,000
54.0	2-1/8	116,000	162,000	162,000	231,000
56.0	2-3/16	124,000	174,000	174,000	248,000
58.0	2-5/16	132,000	185,000	185,000	265,000
60.0	2-3/8	141,000	198,000	198,000	282,000
62.0	2-7/16	150,000	210,000	210,000	300,000
64.0	2-1/2	159,000	223,000	223,000	319,000
66.0	2-5/8	169,000	236,000	236,000	337,000
68.0	2-11/16	178,000	250,000	250,000	357,000
70.0	2-3/4	188,000	263,000	263,000	376,000
73.0	2-7/8	203,000	285,000	285,000	407,000
76.0	3.0	219,000	307,000	307,000	438,000



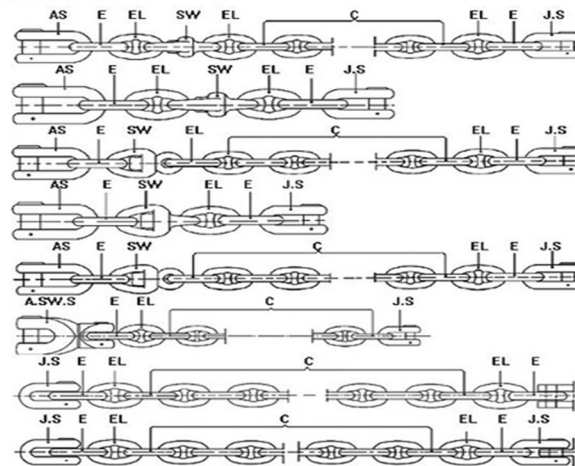
marineusedgood

Stud link anchor chain

A: Kenter Shackle-Chain Connection

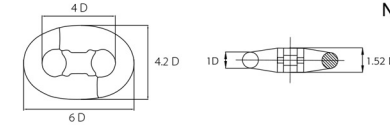


B: D Shackle Connection

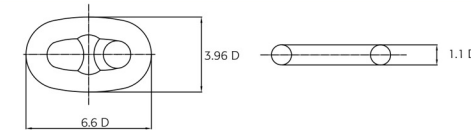


STUD LINK COMPONENTS

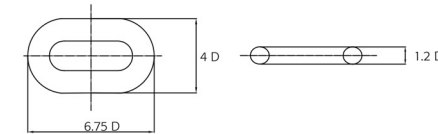
Note: D = Chain material diameter.



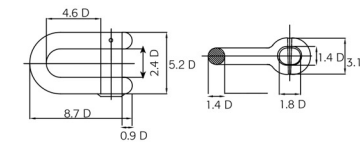
Kenter Shackle (KS): A joining shackle used to join two stud link chain elements together.



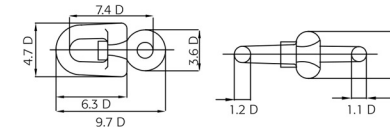
Enlarged Link (EL): The Enlarged Link is most often used to connect an End Link and Swivel to a Common Link.



End Link (E): The studless End Link is designed to accept components such as Anchor Shackles.



D-Type Anchor Shackle (AS): The D-Type Anchor Shackle is used to connect the stud link chain to the anchor.



Swivel (SW): The Swivel is most commonly supplied as an assembly known as a Swivel Forerunner which consists of: Common Link (C) + Enlarged Link (EL) + Swivel (SW) + Enlarged Link (EL) + End Link (E)



The Common Link (C) connects to another Common Link (C) in the main Anchor Chain by means of a Kenter Shackle (KS). At the other end, the studless End Link (E) allows connection to an Anchor Shackle (AS).

- Components supplied with Lloyds certification.
- Available in self colour or galvanised finish.
- All stud link chain and components imported to order.
- Manufactured in China.



marineusedgood

Stud link anchor chain

STUD LINK CHAIN & COMPONENT WEIGHTS

Approximate Weights Table

Diameter	Stud Link Chain Weight		Common Link	Enlarged Link	End Link	Joining Shackles Kenter	Joining Shackles Type D	Anchor Shackles Type D	Swivel
	kg/m	kgs/27.5m	kg	kg	kg	kg	kg	kg	kg
12.5	3.5	96	0.17	0.23	0.23	0.39	0.8	1.1	0.9
14.0	4.4	121	0.24	0.32	0.36	0.51	1.1	1.3	1.3
16.0	5.8	160	0.36	0.50	0.51	0.62	1.3	1.6	1.7
17.5	7.0	193	0.47	0.74	0.68	0.82	1.6	2.0	2.1
19.0	8.1	223	0.60	0.88	0.89	1.00	1.8	2.5	2.5
20.5	10.0	275	0.75	1.10	1.13	1.35	2.1	3.3	3.1
22.0	11.1	305	0.93	1.25	1.28	1.6	2.5	4.0	3.5
24.0	13.3	366	1.21	1.70	1.77	2.0	3.5	5.0	5.0
26.0	15.7	432	1.55	2.15	2.2	2.7	4.3	6.0	6.0
28.0	18.3	503	1.9	2.8	2.9	3.3	5.0	8.0	7.5
30.0	21.0	578	2.4	3.2	3.3	3.9	7.0	9.5	9.0
32.0	23.9	657	2.9	3.9	4.0	4.6	7.5	12.0	11.0
34.0	27.0	743	3.4	4.7	5.0	5.8	9.5	14.0	13.5
36.0	30.2	831	4.0	5.5	5.9	6.6	11.0	17.0	16.0
38.0	33.7	927	4.7	6.1	6.8	7.8	13.0	20.0	19.0
40.0	37.1	1,020	5.5	7.1	8.0	9.1	15.0	23.0	23.0
42.0	40.5	1,114	6.4	8.4	9.6	10.5	17.5	26.0	27.0
44.0	44.3	1,218	7.4	10.0	11.2	12.2	20.0	29.0	32.0
46.0	48.5	1,334	8.5	11.5	13.0	14.0	22.5	33.0	37.0
48.0	52.8	1,452	9.8	13.1	15.0	16.0	26.0	37.0	44.0
50.0	57.0	1,568	11.0	15.0	17.0	18.0	29.0	41.0	57.0
52.0	62.0	1,705	13.0	17.0	20.0	20.0	31.0	45.0	57.0
54.0	66.0	1,815	14.0	19.0	22.0	20.0	34.0	50.0	67.0
56.0	71.0	1,953	16.0	21.0	23.0	24.0	38.0	54.0	67.0
58.0	77.0	2,118	17.0	23.0	25.0	28.0	44.0	65.0	80.0
60.0	83.0	2,283	19.0	25.0	27.0	28.0	48.0	70.0	95.0
62.0	88.0	2,420	21.0	28.0	30.0	33.0	52.0	76.0	95.0
64.0	94.0	2,585	23.0	31.0	34.0	38.0	57.0	82.0	112.0
66.0	100.0	2,750	25.0	34.0	38.0	38.0	66.0	94.0	130.0
68.0	107.0	2,943	27.0	37.0	42.0	44.0	70.0	101.0	130.0
70.0	114.0	3,135	30.0	40.0	45.0	44.0	75.0	108.0	152.0
73.0	124.0	3,410	34.0	45.0	52.0	51.0	87.0	124.0	172.0
76.0	135.0	3,713	39.0	50.0	59.0	58.0	99.0	141.0	194.0

Note: Larger diameter chain and components available on request.



Process Flows





marineusedgood

Mooring Chain

A mooring is any permanent structure to which a vessel may be secured.

Examples include quays, wharfs, jetties, piers, anchor buoys, and mooring buoys.

A ship is secured to a mooring to forestall free movement of the ship on the water.

An anchor mooring fixes a vessel's position relative to a point on the bottom of a waterway without connecting the vessel to shore.

As a verb, mooring refers to the act of attaching a vessel to a mooring.

Stud Link Mooring Chain

Product Code	Chain Ø	Approximate Breaking Load	Approximate Weight
	mm	t	kg/m
MU0032	32	35	20
MU0040	40	55	35
MU0050	50	90	50

Most commonly used as bottom chain on a swing mooring to provide required weight and strength, particularly in heavy tides.



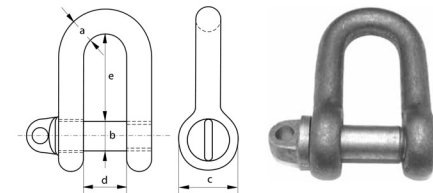
MOORING CHAIN SHACKLES

Self Colour Mild Steel Large Dee Shackles – Screw Pin

Product Code	Dimensions (mm)					Weight
	a	b	c	d	e	kg
02298016	16	16	32	32	64	0.48
02298019	19	19	38	38	76	0.95
02298022	22	22	44	44	88	1.26
02298026	25	25	50	50	100	1.85
02298029	28	28	56	56	112	2.60
02298032	32	32	64	64	128	3.68
02298035	35	35	70	70	140	5.00
02298038	38	38	76	76	152	6.50

These self-colour mild steel dee shackles are designed specifically for connection to self-colour mild steel chains in mooring applications to reduce the possibility of galvanic corrosion.

- Mild steel, grade 30.
- Uncertified.
- Self colour finish.
- Manufactured in China.



For more information, please contact us at email: info@marineusedgood.com